

Downstream Equipments

HHGO Series

HHGO100 / HHGO300 / HHGO600 / HHGO850
HHGO1200 / HHGO1600 / HHGO2500 / HHGO3000

hertz[®]
KOMPRESSOREN



Filters

The compressed air coming from the compressor may contain unwanted elements such as oil, dust and humidity. The air in the external environment will also affect the quality of the final product. This air must be filtered prior to the final stage of production.

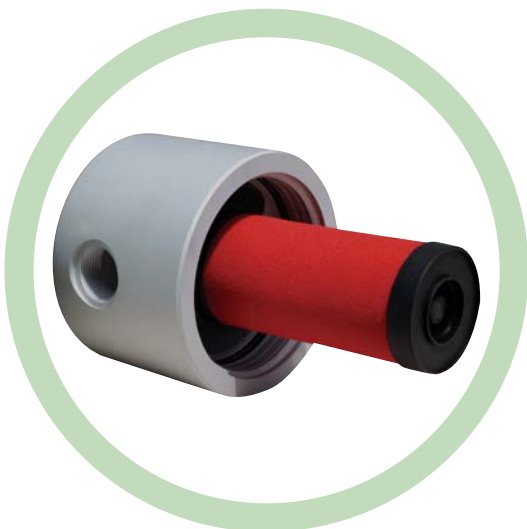
High Pressure Range Compressed Air Filters Features

Hertz manufactures a line of High Performance Compressed Air Filters, Moisture Separators in two different range;

- 1) 50 bar Range made of Aluminum, No welding, strong and reliable design.
- 2) 350 bar Range made of Steel. No welding, and very reliable for High Pressure applications.

Anodised Aluminum Design with High Performance

Hertz High Pressure Range Compressed Air Filters are no welded design. As a result it is very strong and robust. Very thick wall thickness and In-house high pressure test facilities assure the performance. All inner and outer surfaces of 50 bar Aluminum design Filters are Anodised, where 350 bar Carbon Steel design Filters are epoxy electro powder painted.



HHGO Series

HHGO100 / HHGO300 / HHGO600 / HHGO850
HHGO1200 / HHGO1600 / HHGO2500 / HHGO3000

SPECIFICATIONS

hertz[®]
KOMPRESSOREN

Model	Connection Size	Flow Rate at 50 bars		Max / working pressure (bar)	Element Model	Housing Dimensions (mm)			
		(m ³ /h)	(scfm)			A	B	C	D
HHGO100	1/4"	100	42	50	M25	113,4	115,4	25,75	155
HHGO300	1/2"	300	125	50	M50	113,4	115,4	25,75	158,5
HHGO600	3/4"	600	250	50	M100	109,4	115,4	32,25	207
HHGO850	1"	850	350	50	M150	133	138	37,35	250
HHGO1200	1"	1200	500	50	M200	133	138	37,35	314
HHGO1600	1 1/2"	1600	940	50	M250	128	138	44,4	368
HHGO2500	2"	2500	1470	50	M2500	145	158	51,5	393
HHGO3000	2 1/2"	3000	1765	50	M3000	160	178	57,6	386

Specifications	Pre Filtering	General Purpose	Oil Removal	Activated Carbon
Grade	P	X	Y	A
Particle Removal (Micron)	5	1	0,01	0,01
Max. Oil carryover at 21°C (mg/m ³)	5	0,5	0,01	0,003
Max. working pressure (bar)* / *350 bar is an option	50	50	50	50
Max. working temperature (°C)	80	80	80	25
Initial pressure loss (mbar)	40	80	100	80
Pressure loss for element change (mbar)	700	700	700	700
Element colour code	GREEN	BLUE	RED	METAL SS

NOTES

- 1) Grade A must not operate in oil saturated conditions.
- 2) Grade A elements should be replaced periodically to suit the applications but must be changed at least every six months.
- 3) Grade A will not remove certain gases including carbon monoxide and carbon dioxide. Please refer to works if in doubt.
- 4) All filters are suitable for use with mineral and synthetic oils.
- 5) The above housings require only one filter element.
- 6) Direction of air flow, inside to out, through filter element. Except grade A
- 7) Manual drain is standard. Electronic timer is optional.

ORDERING

The complete filter model number contains the size and grade, Example - 1/4" general purpose filter model HHGO100MX with replacement filter element model M100X.

DRAIN TYPE

HG / Manual with steel

